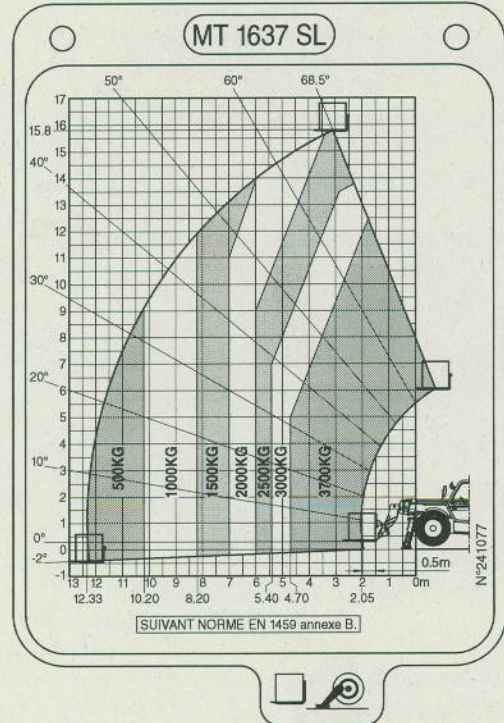
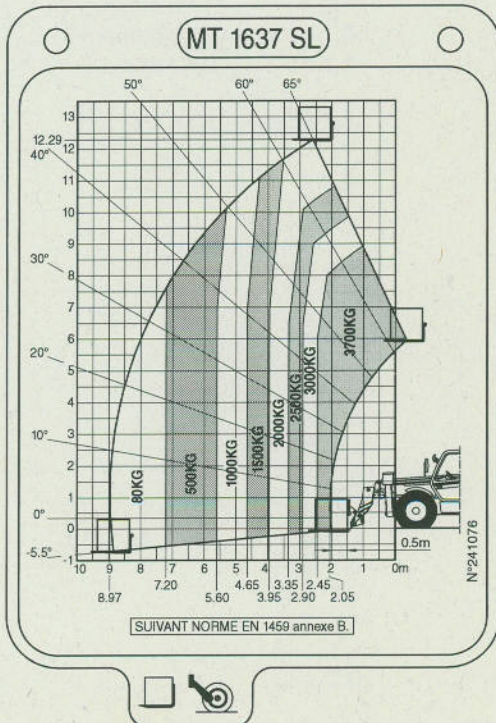
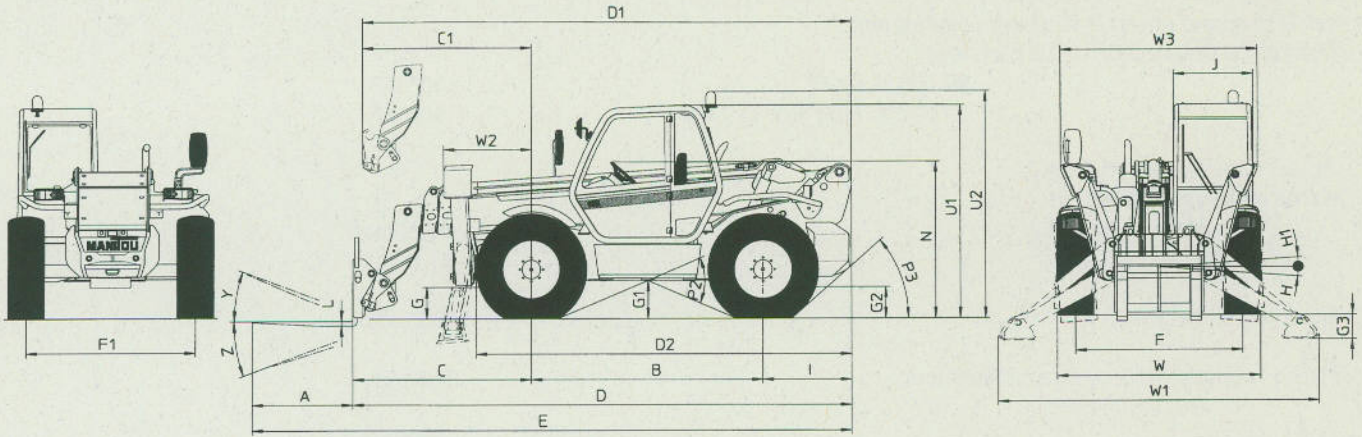


DIMENSIONS AND LOAD CHART

MT 1637 SL Série 2
 MT 1637 SL Turbo Série 2
 MT 1637 SL Turbo MONO-ULTRA Série 2



SPECIFICATIONS

- Level of sound pressure in the driver's cab LpA (According to standard prEN 12053 : 1995)	83,6 dB	
- Level of sound power in the LwA environment (According to directive 2000 / 14 CE guaranteed)		
MT 1637 SL Série 2	105 dB	
MT 1637 SL Turbo Série 2 + T M-U	106 dB	
- Travel speed of the lift truck (Except particular conditions)		
. Forward	27,6 km/h	
. Reverse	27,6 km/h	
- Standard lift height	15800 mm	
- Rated capacity with standard attachment	3700 kg	
- Load center	500 mm	
- Weight of forks (Each)	72 kg	
- Lifting motions (Jib retracted)		
. Unladen lifting	12 s	30,3 m/mn
. Laden lifting	12,5 s	28,9 m/mn
. Unladen lowering	8,5 s	42,8 m/mn
. Laden lowering	8 s	45 m/mn
- Telescoping motions (Lifting jib)		
. Extending of telescope I, unladen	13,9 s	14,8 m/mn
. Extending of telescope I, Laden	14,7 s	14 m/mn
. Retracting of telescope I, unladen	10,6 s	19,5 m/mn
. Retracting of telescope I, Laden	10,2 s	20,2 m/mn
. Extending of telescope II, unladen	7,96 s	25,9 m/mn
. Extending of telescope II, Laden	9,7 s	21,3 m/mn
. Retracting of telescope II, unladen	7,15 s	28,9 m/mn
. Retracting of telescope II, Laden	7,25 s	28,5 m/mn
. Extending of telescope III, unladen	10,4 s	19,8 m/mn
. Extending of telescope III, Laden	11,5 s	17,9 m/mn
. Retracting of telescope III, unladen	9,7 s	21,3 m/mn
. Retracting of telescope III, Laden	8,7 s	23,7 m/mn
- Reverse tilt time unladen	5,3 s	23,4 °/s
- Forward tilt time unladen	8,4 s	14,7 °/s
- Lift truck weight with standard attachment		
. Unladen	10860 kg	
. Rated load	14560 kg	
- Axle weight with attached equipment (Transport position)		
. Front unladen	4675 kg	
Rated load	12550 kg	
. Rear unladen	6185 kg	
Rated load	2010 kg	
- Tensile strain at coupling hook		
. Unladen	7250 daN	
. Rated load	7500 daN	
MT 1637 SL Série 2	7500 daN	
MT 1637 SL Turbo Série 2 + T M-U	9400 daN	
- Break out force with bucket (According to standard ISO 8313)	7000 daN	

CHARACTERISTICS

MT 1637 SL Série 2 MT 1637 SL Turbo Série 2 MT 1637 SL Turbo MONO-ULTRA Série 2

FRONT AND REAR TYRES

	DIMENSIONS	PRESSURE	TYRE LOAD		PRESSURE ON THE CONTACT SURFACE		AREA OF THE CONTACT SURFACE	
					HARD GROUND	LIGHT GROUND	HARD GROUND	LIGHT GROUND
STANDARD	440/80-24 T37 158B DUNLOP	4,5 Bar	Front unladen	2350 kg	8,4 kg/cm ²	2,3 kg/cm ²	280 cm ²	1010 cm ²
			Front laden	6300 kg	12,8 kg/cm ²	3,5 kg/cm ²	490 cm ²	1780 cm ²
			Rear unladen	3100 kg	9,1 kg/cm ²	2,5 kg/cm ²	340 cm ²	1230 cm ²
			Rear laden	1000 kg	6,5 kg/cm ²	1,8 kg/cm ²	155 cm ²	560 cm ²
OPTION	15,5R25 L2 1* VKT Tub fire BRIDGESTONE	5,6 Bar	Front unladen	2350 kg	8,1 kg/cm ²	3,7 kg/cm ²	290 cm ²	640 cm ²
			Front laden	6300 kg	10,2 kg/cm ²	5 kg/cm ²	619 cm ²	1260 cm ²
			Rear unladen	3100 kg	8,4 kg/cm ²	3,9 kg/cm ²	368 cm ²	785 cm ²
			Rear laden	1000 kg	6,7 kg/cm ²	2,8 kg/cm ²	150 cm ²	360 cm ²
OPTION	400/80-24 T37 156B DUNLOP	4,75 Bar	Front unladen	2350 kg	9,4 kg/cm ²	2,6 kg/cm ²	250 cm ²	900 cm ²
			Front laden	6300 kg	14,1 kg/cm ²	3,9 kg/cm ²	445 cm ²	1600 cm ²
			Rear unladen	3100 kg	10,2 kg/cm ²	2,8 kg/cm ²	305 cm ²	1090 cm ²
			Rear laden	1000 kg	7,1 kg/cm ²	2 kg/cm ²	140 cm ²	500 cm ²
OPTION	15,5x25 12PR SGL DL 2A GOODYEAR	4,5 Bar	Front unladen	2350 kg	6,8 kg/cm ²	3,7 kg/cm ²	345 cm ²	635 cm ²
			Front laden	6300 kg	8,5 kg/cm ²	4,6 kg/cm ²	740 cm ²	1365 cm ²
			Rear unladen	3100 kg	7 kg/cm ²	3,9 kg/cm ²	440 cm ²	810 cm ²
			Rear laden	1000 kg	7,1 kg/cm ²	3,9 kg/cm ²	140 cm ²	260 cm ²
	15,5/80-24 SGI TL 16PR GOODYEAR	4,5 Bar	Front unladen	2350 kg	9,8 kg/cm ²	2,7 kg/cm ²	240 cm ²	880 cm ²
			Front laden	6300 kg	14,2 kg/cm ²	3,8 kg/cm ²	445 cm ²	1640 cm ²
			Rear unladen	3100 kg	11,3 kg/cm ²	3,1 kg/cm ²	275 cm ²	1015 cm ²
			Rear laden	1000 kg	7,4 kg/cm ²	2 kg/cm ²	135 cm ²	490 cm ²
OPTION	445/70R24 XM47 TL 151G MICHELIN	4,1 Bar	Front unladen	2350 kg	2,1 kg/cm ²	kg/cm ²	1120 cm ²	cm ²
			Front laden	6300 kg	3,4 kg/cm ²	kg/cm ²	1830 cm ²	cm ²
			Rear unladen	3100 kg	2,5 kg/cm ²	kg/cm ²	1270 cm ²	cm ²
			Rear laden	1000 kg	1,2 kg/cm ²	kg/cm ²	830 cm ²	cm ²
	1200R24 X MINE D2 MICHELIN	6,5 Bar	Front unladen	2350 kg	4,6 kg/cm ²	1,2 kg/cm ²	511 cm ²	2029 cm ²
			Front laden	6300 kg	7 kg/cm ²	2,6 kg/cm ²	899 cm ²	2454 cm ²
			Rear unladen	3100 kg	5,3 kg/cm ²	1,5 kg/cm ²	585 cm ²	2104 cm ²
			Rear laden	1000 kg	2,6 kg/cm ²	0,5 kg/cm ²	379 cm ²	1842 cm ²
	15,5R25 XHA MICHELIN	4 Bar	Front unladen	2350 kg	3,1 kg/cm ²	1,45 kg/cm ²	757 cm ²	1623 cm ²
			Front laden	6300 kg	3,7 kg/cm ²	1,65 kg/cm ²	1719 cm ²	3809 cm ²
			Rear unladen	3100 kg	3,2 kg/cm ²	1,49 kg/cm ²	963 cm ²	2082 cm ²
			Rear laden	1000 kg	2 kg/cm ²	0,93 kg/cm ²	499 cm ²	1070 cm ²
	18R19,5 XF TL MICHELIN	6,5 Bar	Front unladen	2350 kg	3,6 kg/cm ²	1,67 kg/cm ²	653 cm ²	1409 cm ²
			Front laden	6300 kg	4,4 kg/cm ²	2,03 kg/cm ²	1437 cm ²	3101 cm ²
			Rear unladen	3100 kg	3,8 kg/cm ²	1,77 kg/cm ²	812 cm ²	1751 cm ²
			Rear laden	1000 kg	3,3 kg/cm ²	1,55 kg/cm ²	300 cm ²	647 cm ²

HYDRAULIC CIRCUIT

- Type of pump
- Lifting, tilting, telescoping, tilting corrector, stabilizer, attachment circuit
 - . Max. rating capacity unladen
 - . Pressure
 - . Capacity
- Steering circuit
 - . Max. rating capacity unladen
 - . Pressure
 - . Capacity
- Braking circuit
 - . Max. rating capacity unladen
 - . Pressure
 - . Capacity
- Filtration
 - . Return
 - . 2nd body suction

Gear double pump with flow divider

1st body	2nd body
98 L/mn	98 L/mn
260 Bar	160 Bar
41 cm ³	41 cm ³
	2nd body
	98 L/mn
	140 Bar
	41 cm ³
	2nd body
	98 L/mn
	40 Bar
	41 cm ³

10 μ
100 μ

	MT 1337 SL Série 2	MT 1337 SL Turbo Série 2	MT 1337 SL Turbo MONO-ULTRA Série 2
A	1200 mm	1200 mm	1200 mm
B	2770 mm	2770 mm	2770 mm
C	2135 mm	2135 mm	2135 mm
C1	2045 mm	2045 mm	2045 mm
D	5955 mm	5955 mm	5955 mm
D1	5865 mm	5865 mm	5865 mm
D2	4435 mm	4435 mm	4435 mm
E	7155 mm	7155 mm	7155 mm
F	1990 mm	1990 mm	1990 mm
F1	1990 mm	1990 mm	1990 mm
G	500 mm	500 mm	500 mm
G1	495 mm	495 mm	495 mm
G2	500 mm	500 mm	500 mm
G3	290 mm	290 mm	290 mm
H	4 °	4 °	4 °
H1	4 °	4 °	4 °
I	1050 mm	1050 mm	1050 mm
J	950 mm	950 mm	950 mm
K	1040 mm	1040 mm	1040 mm
L	50 mm	50 mm	50 mm
N	1880 mm	1880 mm	1890 to 1940 mm
O	125 mm	125 mm	125 mm
P2	45,5 °	45,5 °	45,5 °
P3	50 °	50 °	50 °
R	3660 mm *** 3935 mm ****	3660 mm *** 3935 mm ****	3660 mm *** 3935 mm ****
S	8720 mm *** 8870 mm ****	8720 mm *** 8870 mm ****	8720 mm *** 8870 mm ****
T	4665 mm	4665 mm	4665 mm
U1	2590 mm	2590 mm	2590 mm
U2	2730 mm * 2770 mm **	2730 mm * 2770 mm **	2730 mm * 2770 mm **
V	5600 mm *** 5750 mm ****	5600 mm *** 5750 mm ****	5600 mm *** 5750 mm ****
V1	1320 mm *** 1470 mm ****	1320 mm *** 1470 mm ****	1320 mm *** 1470 mm ****
V2	4000 mm *** 4150 mm ****	4000 mm *** 4150 mm ****	4000 mm *** 4150 mm ****
W	2425 mm	2425 mm	2425 mm
W1	3820 mm	3820 mm	3820 mm
W2	1050 mm	1050 mm	1050 mm
W3	2350 mm	2350 mm	2350 mm
Y	12 °	12 °	12 °
Z	112 °	112 °	112 °

* : 1st ASSEMBLY

** : 2nd ASSEMBLY

*** : Up to machine Nr : 147615

**** : From machine Nr : 147616