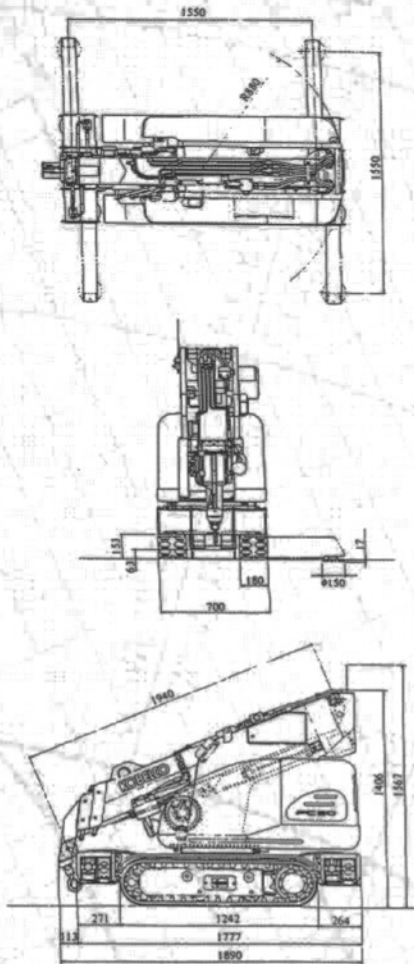


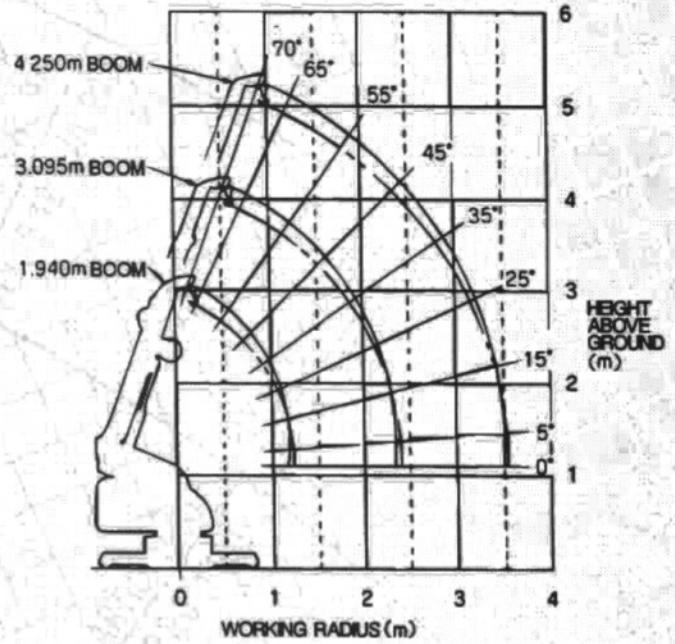
# INDEPENDENT CRANES **450 kg CRAWLER**

## dimensions



## working radius - lifting height

## load chart

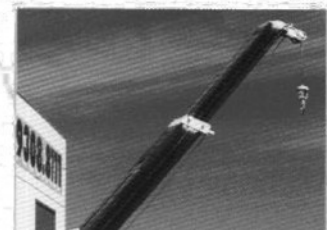


## total rated loads

Static (m)	1.0	1.5	2.0	2.5	3.0	3.5
(kg)	450	450	400	300	240	185

Mobile (m)	0.5	1.0	1.5	2.0
(kg)	250	155	90	30

Tare: 980 kg  
Ground Pressure: 0.32kg/cm<sup>2</sup>



## INDEPENDENT CRANES

[www.independentcranes.com.au](http://www.independentcranes.com.au)

108 Hume Hwy, Somerton Vic 3062  
Phone 03 9308 8111 Fax 03 9308 8222  
email [admin@independentcranes.com.au](mailto:admin@independentcranes.com.au)